

Extra Regular CO2 Tank - \$40.00

Great to have in situations where you can't get to a quick tank fill and need to shoot tons of shirts quickly.

Deluxe Co2 Fill Station - \$85.00

Deluxe Two Valve CO2 Cylinder Fill Station

O-Rings(pack of 10) - \$5.00 per pack

O Rings are used to seal your CO2 bottle into your launcher, occasionally they become damaged, worn and will need replacing.

Digital Scale - \$35.00

This optional accessory allows you fill your own CO2 tanks by weighing them accurately.



TSHIRTGUN.com

Micro Mini T-Shirt Launcher



Operation Manual

TSHIRTGUN.com

WARNING! The T-Shirt Launcher Series are not toys. Misuse may cause serious injury or death. **The launcher should never be pointed at any person or animal!!** Recommended at least 18 years of age to operate. Use of CO2 air source required for proper operation – note: no other air types should be used with these devices. Do not expose pressurized air cannon to temperatures exceeding 100 degrees Fahrenheit for extended periods. Never leave launcher “gassed” when not in use. Launcher should be factory tested every 3 years for safety and optimal performance. Do not alter or modify launcher in any way. Do not exceed maximum rated pressures.

Cleaning and Lubrication

The anodized parts of your launcher should be cleaned off with a damp cloth. DO NOT run the launcher under water to clean, as this will damage the internal components. Only O-ring safe oils and lubricants should be used. The Launcher regulators require silicon grease and must be kept clean – recommended every 50-100 shots. Always use War Machine replacement parts.

TO FILL YOUR OWN TANKS

You will need: A 20 or 50 lb siphoned bulk tank from your local Gas/Welding supplier, a Fill Station (optional accessory), and your CO2 tanks. (A digital 10lb scale is also highly recommended)



(PIC 1)



(PIC 2)



(PIC 3)

To fill the tank: Filling a CO2 tank is simple but it can be dangerous if you are not careful. Screw the tank into your fill adapter (PIC 1) and tighten down the pin depressor until you feel resistance. With the bleed valve open (shown in PIC 2), any CO2 in your tank will escape, chilling the tank. If your tank is empty, you should close the bleed valve on the fill station (PIC 3), open the valve on your bulk tank (PIC 3) and fill to about 20oz on your scale. Turn bulk tank OFF and open bleed valve to empty your CO2 tank and chill. (PIC 2) Now you are ready to fill your tank. With the bleed valve closed on your fill station and the bulk tank turned on, you will fill a twenty-ounce tank to about seventeen ounces. This way if the gas expands, your tank pressure will not rise above safe levels. Close your bulk tank valve, and unscrew the fill adapter until you feel the resistance of the valve pin decrease sufficiently. Open the bleed valve to bleed the excess CO2 that's in the line and unscrew the CO2 tank. Your 20oz tank is now filled. Repeat as needed for multiple tank fills.

Limited Lifetime Warranty

War Machine Inc. warranties to initial retail purchaser that the product is free from defects in materials and workmanship, subject to the limitations of the warranty. Disposable parts (o-rings, seals etc) are not warranted. The use of non sanctioned accessories or upgrades is not covered and will void your warranty. This warranty does not cover aesthetic damages (scratches, dents and nicks) misuse, or improper disassembly and re-assembly, or attempts made to drill holes, remove metal or modify this product from its original state, which could cause pressure safety factors or degrade the performance. This warranty does not cover failures due to wear and tear, exposure to the elements or extreme conditions. This warranty is limited to the repair or replacement of defective parts with the customer to pay shipping costs. This limited lifetime warranty is effective to the original customer with proof of purchase and proper warranty registration. The warranty is non-transferable. Repair or replacement of defective material is at the discretion of WAR MACHINE INC.

Warranty Claim/Return Policy

For any warranty return/claim needed, please contact our RMA claims department at 1-864-349-1500. An RMA number must be issued prior to any warranty return. Please be sure to mail your warranty registration card found in your shipping package for proper registration of your War Machine Product. All returns should be pre-paid by shipper and shipped to:

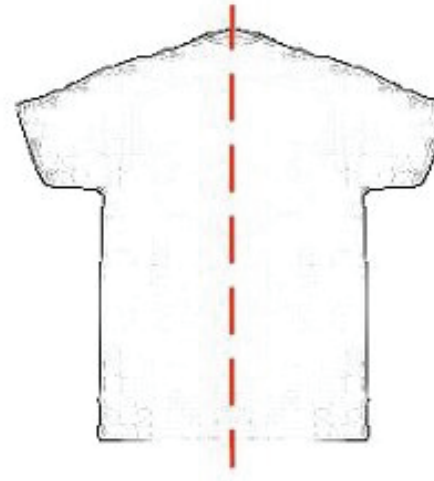
War Machine Warranty Depot
3429 Rutherford Road Ext STE B
Taylors, SC 29687

MICRO MINI Nomenclature Diagram

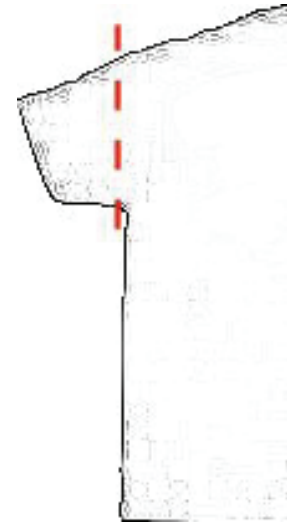


FOLDING TIPS FOR T-SHIRTS

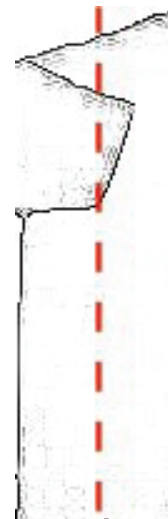
1. Fold T-Shirt in half



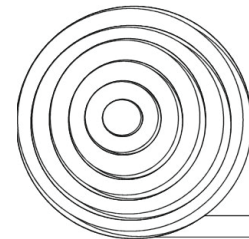
2. Fold Sleeves in



3. Fold in half again



4. Starting from the neck, begin a tight roll. As the roll is done, a slight pull on the opposite end will insure the tightness of the roll.



5. Test to make sure the shirt fits into the barrel of the launcher easily – if it does, the roll should be secured with rubber bands, balloons, tape, etc. to make sure it maintains a tight roll.

Note: The tighter the shirt fits into the barrel, the farther it will travel. Likewise, distance is affected by how loose the roll is in the barrel. A tightly rolled shirt will go farther in distance than a loosely rolled shirt.

CHARGING AND FIRING THE CANNON



STEP 1

This is your standard pin valve CO2 tank. It is shipped EMPTY because of federal law. The first step is to fill your tank. You can either fill it yourself using the method described earlier in this manual or take it to a local paintball shop or sporting goods store and have them fill it for you.

STEP 2

Hold the cannon down in a safe direction and screw the tank into the regulator in a clockwise motion as shown in the photo. Be careful not to crossthread.



STEP 3

Place your pre rolled t-shirt down into the barrel.



STEP 4

While pointing the cannon up in a safe direction push the pressure adjustment lever toward the regulator while looking at the pressure gauge. You should hear the cannon begin to fill. NOTE that fingers are off of the trigger.



STEP 5

When you reach your desired pressure as shown on the pressure gauge. Release the pressure adjustment lever. If your desired pressure is 300psi (the max pressure of the cannon) the cannon will stop filling automatically at that pressure by design.



STEP 6

Point in a safe direction and pull the trigger to fire.

Repeat steps 3-6 for each desired shot



DEGASSING THE CANNON (after use)

STEP 1

After your last shot, point the cannon down in a safe direction and pull the trigger again to make sure that the chamber is completely discharged. The pressure gauge should read 0 psi.



STEP 2

Unscrew the CO2 tank one half turn (counter - clockwise). You should hear a little puff of air as the remaining pressure is outgassed through the vent hole (SEE PHOTO) on the bottom of the regulator. Then continue to remove the tank by turning counter clockwise. Once removed store the tank in the case with the launcher until next use.

